

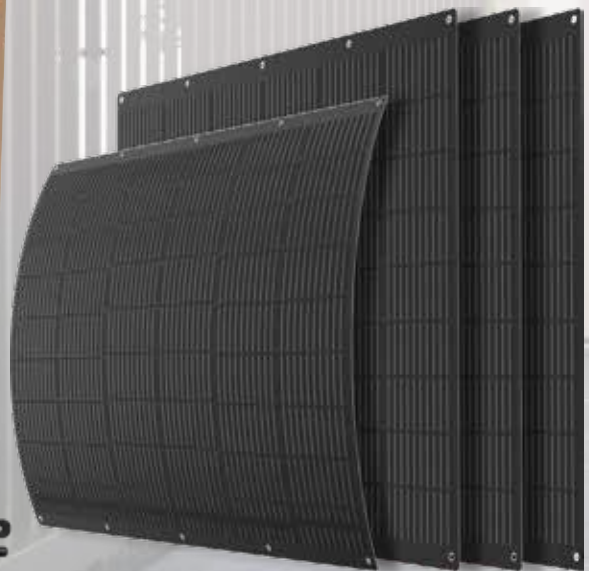
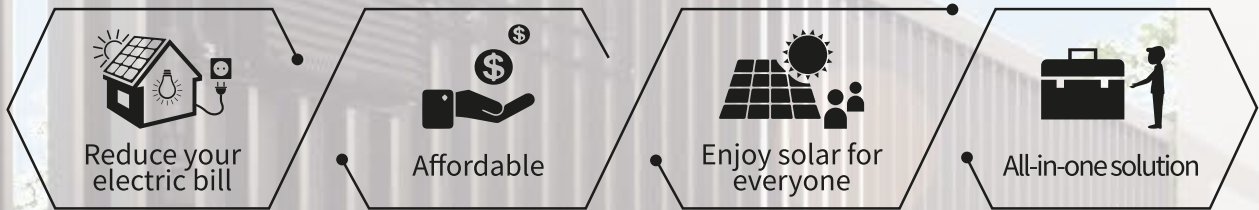
Flexible solar Kit

Plug & Play Flexible installation



On-Grid Kits for residential PV systems. It is a “Plug-and-play design” composed of flexible solar panel + microinverter, which can be installed by yourself.

even smaller in size and you can put it in the car for easier transportation.



Power Cord
Plug and play cable

PV Connect Cable
MC4 Extension Cable

Accessories
Tie



Residential On-Grid PV Kits

SYSTEM SIZE				
PRODUCT MODEL	SUN-VFSK-400W		SUN-VFSK-800W	
PV System Size Nominal (Wp)	400W		800W	
PV MODULE SPECIFICATION				
Panel Model	VF100W(BK)		VF200W(BK)	
Power (W)	100		200	
Vmp (V)	16.41		15.42	
Voc (V)	20.04		18.71	
Isc (A)	6.39		13.45	
Imp (A)	6.17		13.01	
Dimensions (L x W x H)(mm)	1000 x 630 x 3		1140 x 915 x 3	
PV module weight (kg)	2.2		3.4	
Output cables	4mm ² -50cm cables + mc4		4mm ² -50cm cables + mc4	
Operating Temperature	-40 °C ~ 85 °C		-40 °C ~ 85 °C	
MICROINVERTER SPECIFICATIONS				
Inverter Size (w)	400		800	
Max DC Power (W)	430		870	
Max DC Voltage (V)	63		63	
MPPT Voltage range (V)	14-63		14-63	
No.of MPPT'S	1		2	
Max AC Power (VA)	400	450	800	1000
Max Output Current (A)	1.74	1.96	3.48	4.50
AC Nom.Voltage/Voltage Range (V)	230/180 ~ 275		230/180 ~ 275	
AC Grid Frequency range (Hz)	50/45 - 55		50/45 - 55	
Number of phases	1		1	
Dimensions (L x W x H)(mm)	181 x 203 x 31		274 x 222 x 36.5	
Inverter weight (kg)	1.75		3.22	
Compliance	IEC/EN 62109-1, IEC/EN 62109-2, IEC/EN 61000-6-1/-2/-3/-4, EN50549-1: 2019, VDE-AR-N 4105: 2018, CEI0-21			
* 12/240VUL inverters also available upon request				
SYSTEM LAYOUT				
# of Modules	4		4	
# of inverters	1		1	
# of inputs	2		2	
PV Layout options	Landscape or Portrait		Landscape or Portrait	
PV Array Surface Area (m ²)	2.52		4.17	
PV Array Weight (kg)	8.8		13.6	
PRODUCTION ESTIMATES (KWh)				
*Projected yearly output at 1100GHI/year	822	925	1647	2059
*Projected yearly output at 1460GHI/year	1091	1228	2186	2733
*Projected yearly output at 1825GHI/year	1363	1535	2733	3417
*Based on 0.85% system derating(formula=DC Power x peak sunshine hour/year x derate factor)(GHI=Global horizontal irradiance)				
SYSTEM OPTIONS				
Communication	WIFI(WE-P1) / Sub-1G(BE-P1)		WIFI(WE-P2) / Sub-1G(BE-P2)	
Battery Bank	Optional		Optional	
Packing Configuration				
Weight (kg)	16.5		23.5	
Dimensions (L x W x H)(mm)	1040x 670x 100mm		1180 x 950 x 100mm	
Container	20'GP	40'GP	20'GP	40'GP
Pieces/Pallet	1050 x 1110 + 1050 X 680		1190 x 1110 x 120 + 1190 x 910 x 120	1190 x 1110 x 120
Pallets per Container	20	60	16 + 4	40
Pieces per Container	270	660	212	500